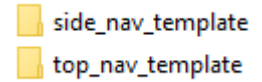


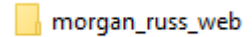
Dreamweaver - Site Setup

NOTE: This Guide was done using Dreamweaver CC 2015, you may have a slightly newer version. Some images may look a bit different on your version but they will still work the same way.

1) **Copy** your chosen template (**top_nav** or **side_nav**) - your teacher will tell you where they are:



2) **Rename** the folder **surname_firstname_web**



3) Open Adobe Dreamweaver

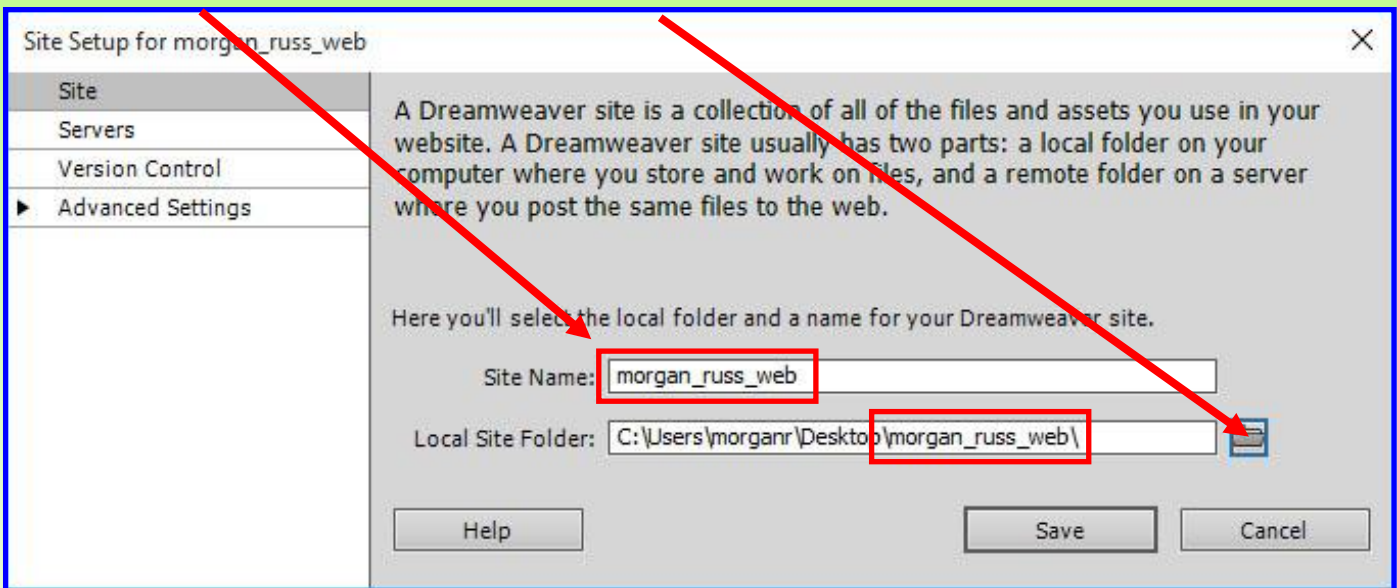


4) Click on **Site / New Site**

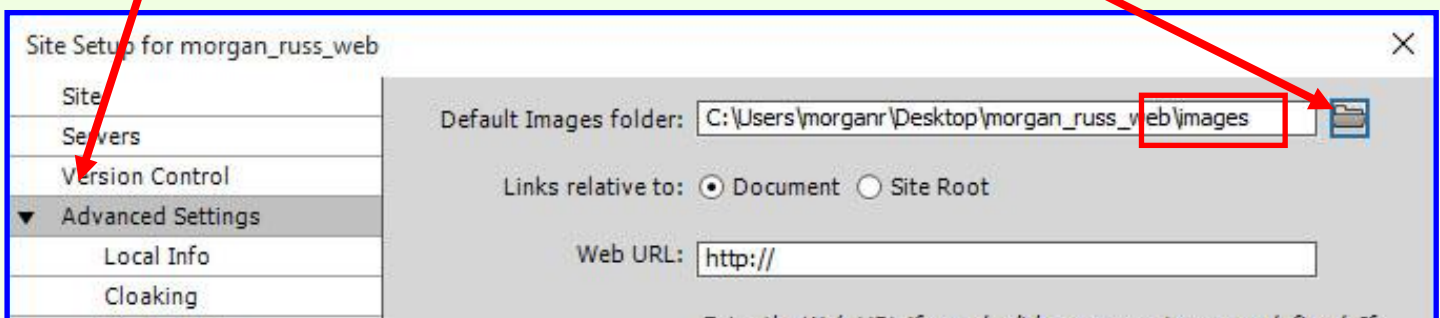


5) Name the website

6) Click on the **Local Site Folder** to locate the template on your laptop.



7) On **Advanced Settings/Local Info** tab click on the **Default Images folder** and browse to the **images** folder inside your website template



8) Click on **Save** and then **Done** to finish

9) You should now see all the files you need. If you don't, then you need to get your Teacher to check your settings.

